



MONTHLY MEMBERSHIP PROGRESS REPORT

District 2 S4

Results as of: 10/31/2016

GMT: HAL GRIFFIN

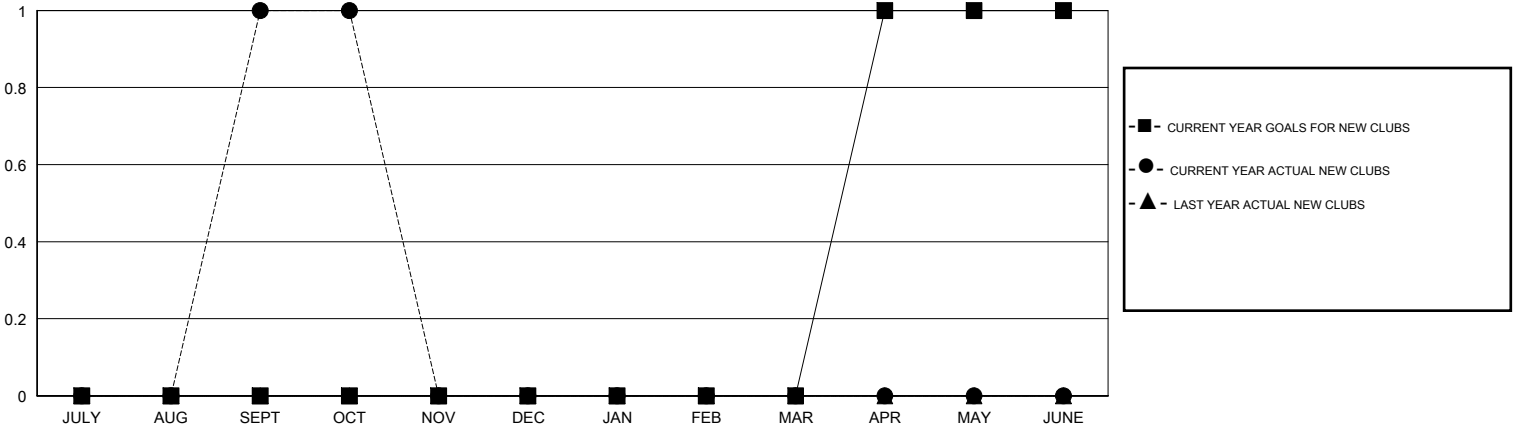
LOCATION TEXAS

GMT CA 1

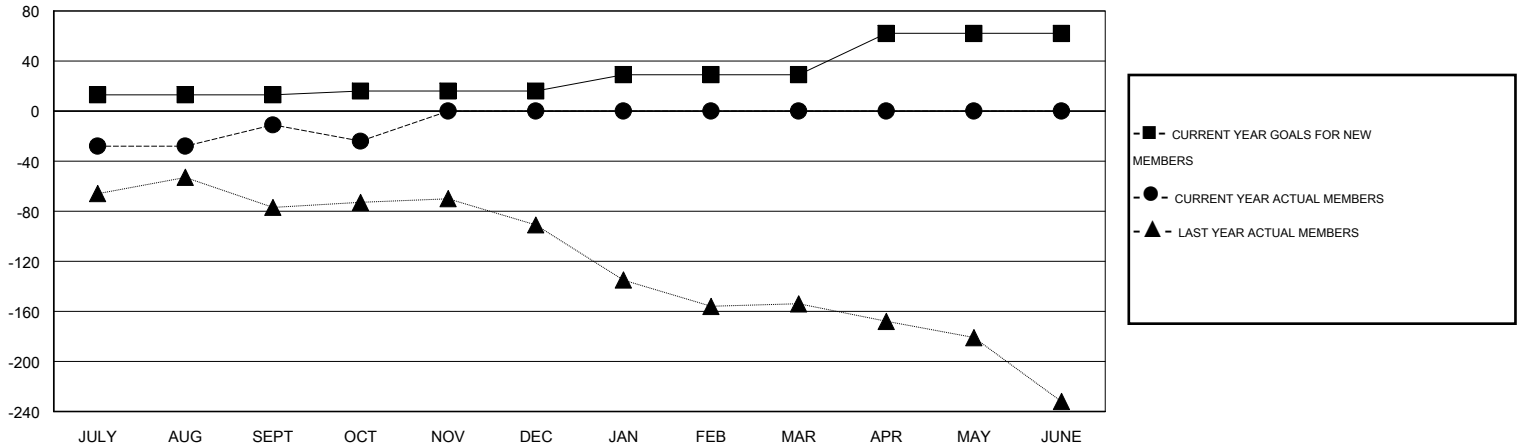
Clubs				
RESULTS FOR 2016-2017				
QUARTER	NEW CLUB GOAL	NEW CLUBS	DROPPED CLUBS	NET GAIN/LOSS
JULY/AUG/SEPT	0	1	1	0
OCT/NOV/DEC	0	0	0	0
JAN/FEB/MAR	0	0	0	0
APR/MAY/JUNE	1	0	0	0

Members				
RESULTS FOR 2016-2017				
QUARTER	NEW MEMBER GOAL	CHARTER AND NEW MEMBERS ADDED	DROPPED MEMBERS	NET GAIN/LOSS
JULY/AUG/SEPT	13	107	118	-11
OCT/NOV/DEC	3	31	44	-13
JAN/FEB/MAR	13	0	0	0
APR/MAY/JUNE	33	0	0	0

GOALS AND ACTUAL NEW CLUBS CUMULATIVE



GOALS AND ACTUAL MEMBERS CUMULATIVE



DROPPED CLUBS: 1

42 CLUBS OF 84 ADDED 1 OR MORE NEW MEMBERS

GENDER DISTRIBUTION	
MALE	1,425 (60.56%)
FEMALE	928 (39.44%)

DROPPED MEMBERS	
DECEASED	7
CLUB CANCELLED	2
OTHER	153
TOTAL	162

[CLICK HERE FOR HEALTH ASSESSMENT DATA](#)

FAMILY UNIT MEMBERS	387
HEAD OF HOUSEHOLD	190
NON-HEAD OF HOUSEHOLD	197